



DC-64D

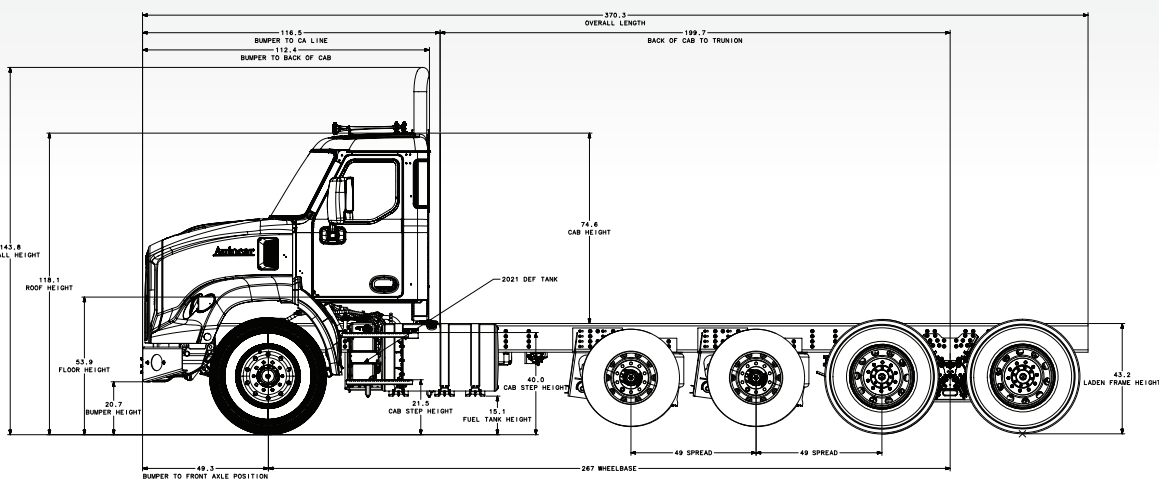
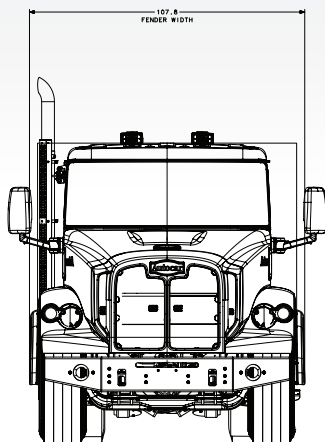
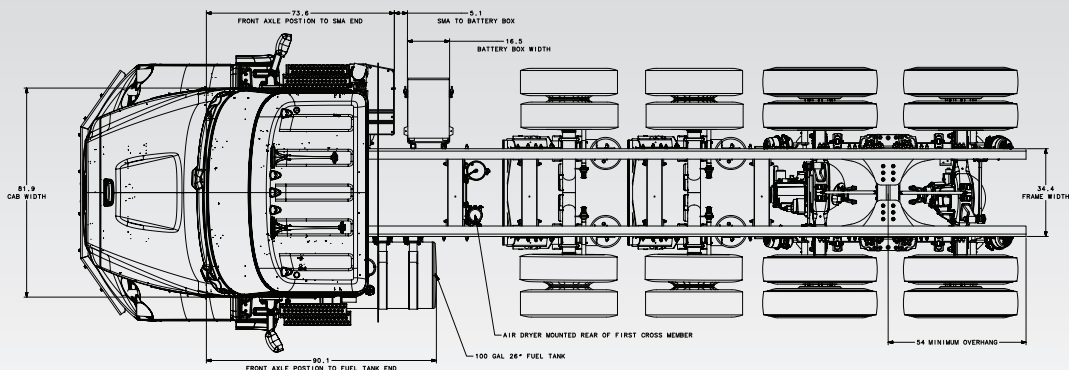
SEVERE-DUTY CONVENTIONAL PURPOSE-BUILT FOR DUMP

DC-64D

Representative
Dump Truck Specifications.

Your truck will be
custom-engineered for
your application.

ALL DIMENSIONS IN INCHES



CONFIGURATION	BASE MODELS / STANDARDS	
	DC-64D - Class 8 Construction Applications	
Steering	Single left hand drive w/dual M100 Sheppard gears	
BBC	112.5"	
FOH / Bumper to C/L Front Axle	49.3"	
CA / CT	Wheelbase minus 63.1"	
FAWR	Min: 16,000	Max: 20,000
RAWR	Min: 40,000	Max: 52,000
GVWR	Min: 56,000	Max: 84,000
Wheelbase	Min: 210"	Max: 297"
* Est. Base Model Chassis Weights (Lbs.)		
Front Axle *	9,800	
Rear Axle *	7,800	
Chassis Total *	17,600	
	* Weight will vary w/wheelbase, RFOH and optional equipment specified	

CHASSIS SPECIFICATIONS	
Construction	160 KSI "C"-channel ladder, huck bolted
Wheelbase	210" Min. - 297"+ (3" increments)
AF / RFOH Length	56" Min. - 116"+ (application specific rear cut)
Frame Rail Dimensions	Frame flange: 4.1" Frame thickness: 7/16"
Frame Rail Dimensions - STD	10.875" RBM: 3.7M LBF.IN (160KSI) - 4.5M LBF.IN w/liner
Option #1	11.25" RBM: 3.9M LBF.IN (160KSI) - 4.7M LBF.IN w/liner
Option #2	12.25" RBM: 4.4M LBF.IN (160KSI) - 5.3M LBF.IN w/liner
Formed .25" x 10" Channel Liner	Optional 120 KSI available
Front Tow Loops	2 recessed behind front bumper, 80,000 lbs towing capacity
Fuel Tank Size	No painted steel option, unpainted or polished aluminum 45-125 gal. - 22" or 26" diameter
Location, Fuel Tank(s)	LH frame rail under cab steps
Fuel/Water Separator - Heated (Opt).	Fleetguard FS series/Davco with optional heat & H2O probe

DC-64D CHASSIS SPECIFICATIONS

DRIVE SPECIFICATIONS		6X4
Engine - Diesel		Cummins L9 and X12
Available Diesel HP Ratings		L9: 300-380 hp / X12: 350-500 hp
DEF Tank Capacity / Location		12 gallon in front fuel tank driver side
Engine - CNG		Cummins-Westport ISX12N
Available CNG / LNG HP Ratings		330 hp / 350 hp / 400 hp
Air Compressor		Cummins Wabco 18.7 CFM/25.9 CFM
Air Dryer		WABCO 1800 P with purge tank
Starter		DELCO 39MT w/OCF
Alternator		Delco 160/200 AMP
Batteries		(3) or (4) 2252850/3000/3800 CCA Group 31 ESL M/F
Transmission		Allison 3000, 3500, 4500 RDS
Number of Speeds		1 Reverse, 5 or 6 forward
Push Button Shift Pad		Dash mounted
Driveshafts		Dana-spicer 1710HD or 1810 HD, half round yoke
Radiator		1,380 square inch down flow 12 FPI - for less clogging
Charge Air Cooler		Welded, aluminum construction
Air Cleaner Size		Opti-air 1300 series, optional integrated pre-cleaner, safety filter
Exhaust Outlet Location		RH curb side horiz. diffuser or vertical stack

FRONT AND REAR AXLES	
Front Axles	Hendrickson Steertek NX 18, 20K/Meritor MFS 16, 18, 20K, Dana 2200W
Front Wheels	22.5x8.25" through 22.5x13" Steel disc and polished aluminum (var.)
Front Tire Size	11R22.5 (H) through 425/65R22.5 (var.)
Front Brakes (Q Plus)	Meritor 16.5x6/7" drum or EX-225 air discs brakes
Front Suspension (Spring Flatleaf)	16,000-22,800 lbs. flat and tapered leaf springs
Rear Axles	Meritor RT46-164EH/RT52-185/ RT40-160 * Upon approval
Rear Disc Wheels - Hub Piloted	22.5x8.25" through 24.5x8.25" Steel disc and polished aluminum (var.)
Rear Tire Size	11R22.5(H) through 315/80R22.5 (L), including 24.5" wheels (var.)
Rear Brakes	Meritor 16.5x7/8.62" drum or EX-225 air discs brakes
Rear Suspension	Hendrickson HMX-460 beam, HN-522, HMX-400 * Upon approval
Optional / Rear Suspension - Air Ride	Hendrickson PAX-462 air ride
Brake System - Chassis	FMVSS 121, Dual air brake - ABS 6S/6M
ABS / ATC Systems	WABCO 6S/6M - ATC optional
Pusher Axles (Max 2)	Hendrickson Composilite 13.5/20K available in steerable and non-steerable
Tag Axles	Hendrickson Composilite 13.5/20K available in steerable and non-steerable

CAB SPECIFICATIONS	
Construction	Welded and stamped steel construction w/ corner castings, E-coated prior to painting
Windshield	One piece, raked for visibility, laminated and curved
Cab Glass	Tempered safety, tinted (VLT 75%)
Windows, Cab Door	Power windows and opt. electric door locks
Cab Floor	Heavy duty abrasion resistant mat with optional aluminum diamond plate insert at heel point
Cab Suspension	Twin air bag suspension w/ lateral stabiliser bar
Steering System	Twin Sheppard M100 gears, power assist
Steering Column	Tilt/telescopic w/integral turn signal
Steering Wheel	18" diameter, Polyurethane or black leather with red stitching wrapped wheel, 2 spokes powder coated black or chrome.
Cab Mirrors	Door mounted 14x7" main mirror and 4x3" convex mirror w/ break-away head Black or chrome housing, power/heated/marker light options
Seating Configuration	2 or 3 Person (bench seat)
Seat - Driver / LH	Bostrom T914 air ride mid/hi-back with manual lumbar and optional arm rests, black mordia
Seat - Passenger / RH	Same as driver with optional 2-person low back bench seat
Seat Belts	3 Point, over shoulder & lap, adjustable shoulder height
Air Conditioning, Cabin	Standard, w/ 4 dash and 2 under-dash vents
HVAC System	Standard, integral high capacity system with self cleaning in-cab cabin filter service access, HVAC controller with rotary controls. 360 degree adjustable vents. Fresh air and recirculating type with variable 4 speed fan.
Instrumentation	Comprehensive and customizable selection of analog and soft gauges. Plus, Autocar's revolutionary 7" digital display which shows any gauge with an out-of-standard condition, several modes including a "No-Distracted" mode for safety, and One-Touch Diagnostics to speed resolution of maintenance issues or fault conditions.
Front Bumper	Painted or chromed steel w/integral fog light option
Headlights	LED round
ICC Marker and Turn	LED
DOT Certification	FMVSS standard, CMVSS optional
Paint, Cab (White - Std.)	Interior steel surfaces painted exterior color
Paint, Chassis	Semi-gloss black, polyurethane, optional colors available
Paint, Disc Wheels	White STD, grey optional powder coated

* Various Options are Available, please consult with our Autocar Sales Team.

ENGINE MODELS	MAXIMUM HP	MAXIMUM TORQUE	GOVERNED SPEED	3000 / 3500RDS	4500RDS
Cummins X12 '21 DIESEL	350HP	1350 LB-FT	2000 RPM		X
	380HP	1450 LB-FT			X
	410HP	1450 LB-FT			X
	430HP	1550 LB-FT			X
	455HP	1550 LB-FT			X
	475HP	1700 LB-FT			X
	500HP	1700 LB-FT			X
Cummins L9 '21 DIESEL	300HP	859 LB-FT	2200 RPM	X	X
	330HP	1000 LB-FT		X	X
	360HP	1150 LB-FT		X	X
	380HP	1250 LB-FT		X	X
Cummins ISX12N '19 CNG	330HP	1250 LB-FT	2100 RPM		X
	350HP	1450 LB-FT			X
	400HP	1450 LB-FT			X

The Autocar name, DC, Always Up, and other logos, tradenames, and designations are trademarks of Autocar, LLC and its affiliates. Autocar reserves the right to change, update, or amend these specifications at any time without notice. Consult your Autocar Representative.